

# OFFICE SPACE FOR LEASE

CLOSE PROXIMITY TO BRONX COUNTY SUPREME COURT AND YANKEE STADIUM



## SUITE 1F

### APPROXIMATE SIZE:

644 SF

### ASKING RENT:

\$2,450/Month

### COMMENTS:

- High traffic area
- Full-service building with doorman
- Building tenants include 5 law offices
- Across from Joyce Kilmer Park
- 18 law offices within a 4-block radius

### NEIGHBORS:

Bronx Hall of Justice, Walgreens, Dunkin' Donuts, Checkers, T-Mobile, Chipotle, Starbucks, Concourse Plaza, Bank of America, Multiplex Cinemas, Office of the Bronx District Attorney, Many, many lawyers and doctors!

### TRANSPORTATION:

   Metro-North Railroad



BETWEEN E 162<sup>nd</sup> & 163<sup>rd</sup> STREET

For more information, please contact our exclusive agent:

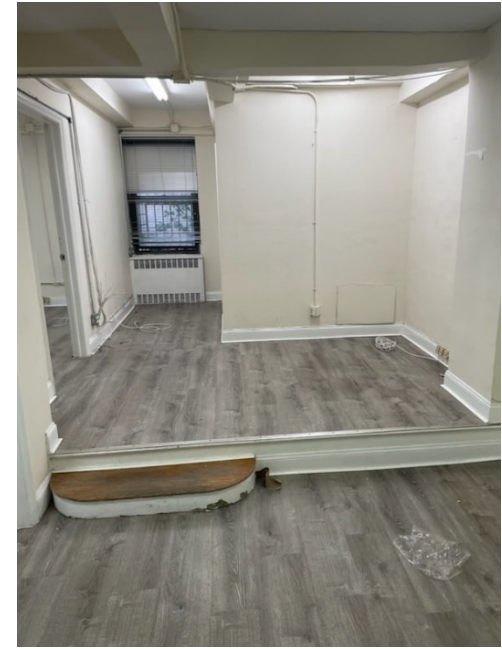
**Magal Gabay**  
Senior Associate  
(646) 424-5321  
mgabay@besenpartners.com

930 GRAND CONCOURSE  
CONCOURSE VILLAGE, BRONX

**BESSEN**  
PARTNERS

# OFFICE SPACE FOR LEASE

CLOSE PROXIMITY TO BRONX COUNTY SUPREME COURT AND YANKEE STADIUM



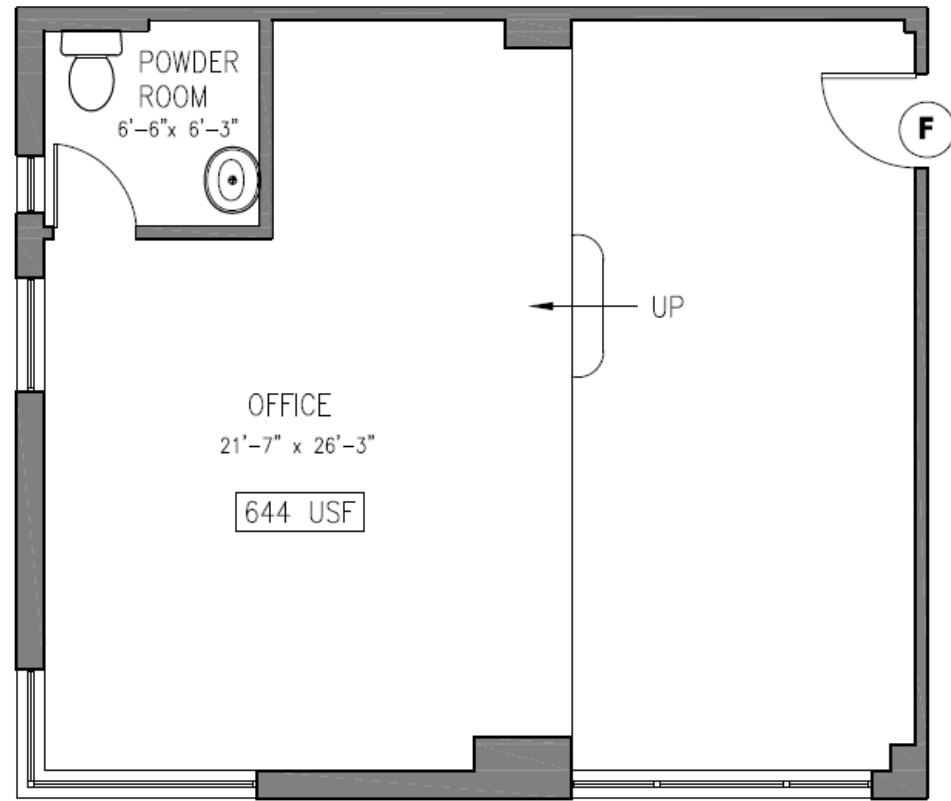
SUITE 1F

930 GRAND CONCOURSE  
CONCOURSE VILLAGE, BRONX

**BESSEN**  
PARTNERS

# OFFICE SPACE FOR LEASE

CLOSE PROXIMITY TO BRONX COUNTY SUPREME COURT AND YANKEE STADIUM



1 FLOOR PLAN

SUITE 1F

930 GRAND CONCOURSE  
CONCOURSE VILLAGE, BRONX

**BESSEN**  
PARTNERS

# OFFICE SPACE FOR LEASE

CLOSE PROXIMITY TO BRONX COUNTY SUPREME COURT AND YANKEE STADIUM



Although all information furnished regarding property for sale, rental or financing is from sources deemed reliable, no express representation is made nor is any implied as to the accuracy thereof and is subject to error, omissions, change of price, rental or other conditions, prior sale, rental or financing or withdrawal without notice.

**BESSEN**  
PARTNERS