

MEDICAL OFFICE/CLINIC FOR LEASE

CLOSE PROXIMITY TO BRONX COUNTY SUPREME COURT AND YANKEE STADIUM



SUITE 1H

APPROXIMATE SIZE:
1,968 SF

ASKING RENT:
\$7,995/Month

COMMENTS:

- High traffic area
- Full-service building with doorman
- Building tenants include 5 law offices
- Across from Joyce Kilmer Park
- 18 law offices within a 4-block radius
- Previous tenant was Essen Healthcare
- Ideally suited for medical clinic/office use

NEIGHBORS:

Bronx Hall of Justice, Walgreens, Dunkin' Donuts, Checkers, T-Mobile, Chipotle, Starbucks, Concourse Plaza, Bank of America, Multiplex Cinemas, Office of the Bronx District Attorney, Many, many lawyers and doctors!

TRANSPORTATION:



BETWEEN E 162nd & 163rd STREET

For more information, please contact our exclusive agent:

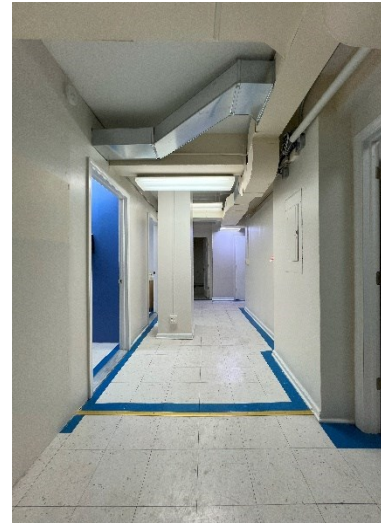
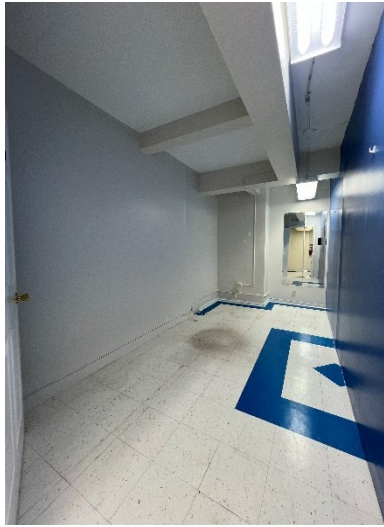
Magal Gabay
Senior Associate
(646) 424-5321
mgabay@besenpartners.com

930 GRAND CONCOURSE
CONCOURSE VILLAGE, BRONX

BESSEN
PARTNERS

MEDICAL OFFICE/CLINIC FOR LEASE

CLOSE PROXIMITY TO BRONX COUNTY SUPREME COURT AND YANKEE STADIUM



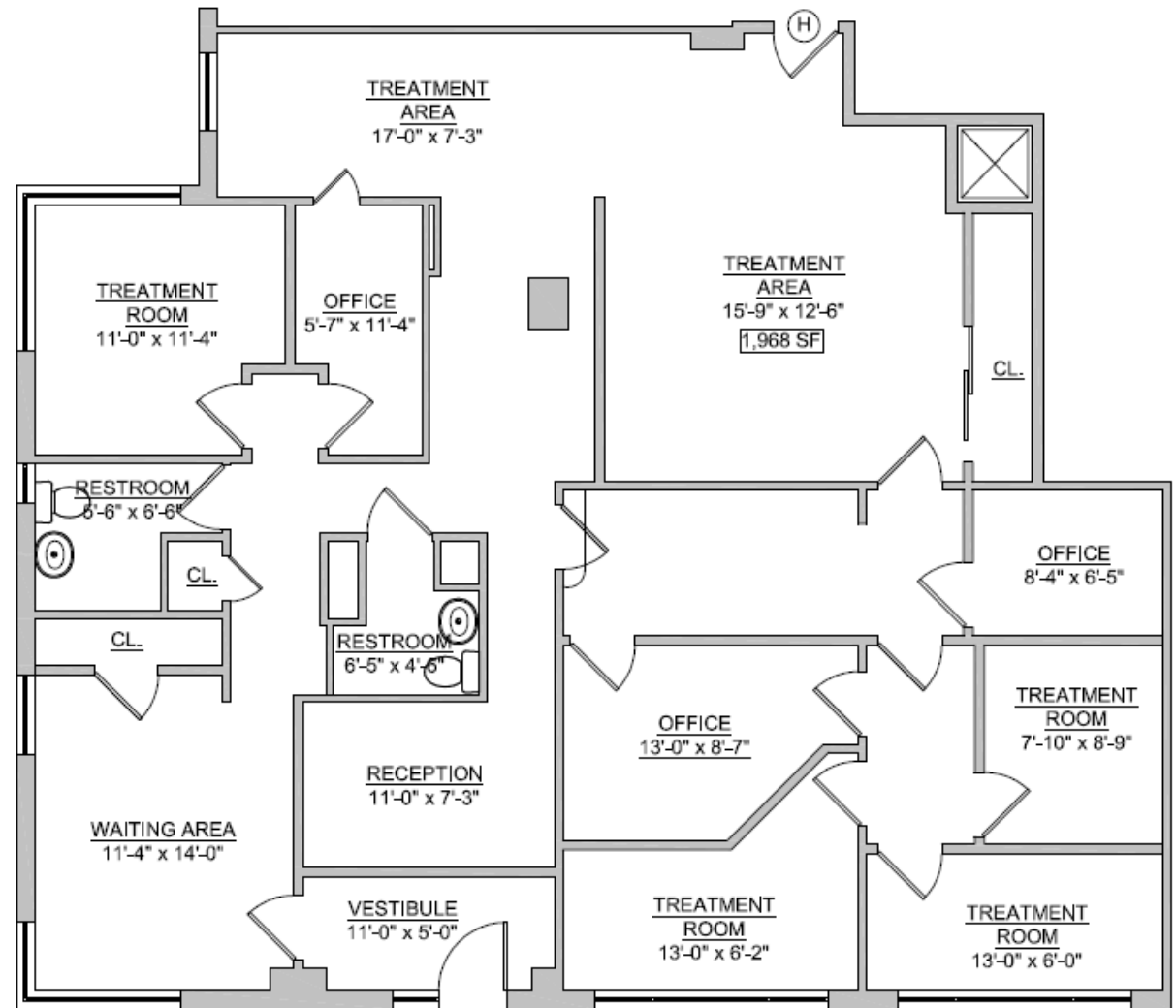
SUITE 1H

930 GRAND CONCOURSE
CONCOURSE VILLAGE, BRONX

BESSEN
PARTNERS

MEDICAL OFFICE/CLINIC FOR LEASE

CLOSE PROXIMITY TO BRONX COUNTY SUPREME COURT AND YANKEE STADIUM



SUITE 1H

930 GRAND CONCOURSE
CONCOURSE VILLAGE, BRONX

BESSEN
PARTNERS

MEDICAL OFFICE/CLINIC FOR LEASE

CLOSE PROXIMITY TO BRONX COUNTY SUPREME COURT AND YANKEE STADIUM



Although all information furnished regarding property for sale, rental or financing is from sources deemed reliable, no express representation is made nor is any implied as to the accuracy thereof and is subject to error, omissions, change of price, rental or other conditions, prior sale, rental or financing or withdrawal without notice.

BESSEN
PARTNERS